

Vorspann-Ventil-Block / pre load valve manifold - Code PVAPVV***20				
Bestellcode für Ersatz-Block / ordering code for replacement manifold:				
PVAP		PV-Zubehör für Druckanschluss / PV accessories for pressure port		
VV		Vorspann-Ventil-Block / pre load valve manifold		
1		Serie PVplus - PV016 - PV023 (BG1)		
2		Serie PVplus - PV032 - PV046 (BG2)		
3		Serie PVplus - PV063 - PV092 (BG3)		
4		Serie PVplus - PV140 - PV180 (BG4)		
5		Serie PVplus - PV270 - PV360 (BG5/6)		
1		Gewinde/Thread: METR; Anschlüsse/ports: BSPP		
3		Gewinde/Thread: UNC ; Anschlüsse / ports: UNF		
4		Gewinde/Thread: METR M14;Anschlüsse/ports: BSPP		
7		Gewinde/Thread: UNC ; Anschlüsse / ports: ISO6149		
8		Gewinde/Thread: METR; Anschlüsse/ports: ISO6149		
N		NBR		
V		FKM		
20		Konstruktionsstand / design series 20		
		enthält / includes:		
Pos	Stck/ Qty	item number	Beschreibung / description	Bemerkung / remark
301	1		Block / manifold BG1, METR, BSPP	PVAPVV11...
301	(1)		Block / manifold BG2, METR, BSPP	PVAPVV21...
301	(1)		Block / manifold BG3 + 4, METR M12, BSPP	PVAPVV31..., PVAPVV41...
301	(1)		Block / manifold BG5/6, METR, BSPP	PVAPVV51...
301	(1)		Block / manifold BG3 + 4, METR M14, BSPP	PVAPVV34..., PVAPVV44...
301	(1)		Block / manifold BG1, METR, ISO6149	PVAPVV18...
301	(1)		Block / manifold BG2, METR, ISO6149	PVAPVV28...
301	(1)		Block / manifold BG3/4, METR, ISO6149	PVAPVV38..., PVAPVV48...
301	(1)		Block / manifold BG5/6, METR, ISO6149	PVAPVV58...
301	(1)		Block / manifold BG1, UNC, BSPP	PVAPVV13...
301	(1)		Block / manifold BG2, UNC, BSPP	PVAPVV23...
301	(1)		Block / manifold BG3/4, UNC, BSPP	PVAPVV33..., PVAPVV43...
301	(1)		Block / manifold BG5/6, UNC, BSPP	PVAPVV53...
301	(1)		Block / manifold BG1, UNC, ISO6149	PVAPVV17...
301	(1)		Block / manifold BG2, UNC, ISO6149	PVAPVV27...
301	(1)		Block / manifold BG3/4, UNC, ISO6149	PVAPVV37..., PVAPVV47...
301	(1)		Block / manifold BG5/6, UNC, ISO6149	PVAPVV57...
VC	1		Vorspannventil-Deckel/pre load valve pilot cover NG16, for SAE flange 3/4"	BG1, NBR
VC	(1)		Vorspannventil-Deckel/pre load valve pilot cover NG16, for SAE flange 1"	BG2, NBR
VC	(1)		Vorspannventil-Deckel/pre load valve pilot cover NG25, for SAE flange 1 1/4"	BG3+4, NBR
VC	(1)		Vorspannventil-Deckel/pre load valve pilot cover NG32, for SAE flange 1 1/2"	BG5+6, NBR
VC	(1)		Vorspannventil-Deckel/pre load valve pilot cover NG16, for SAE flange 3/4"	BG1, FKM
VC	(1)		Vorspannventil-Deckel/pre load valve pilot cover NG16, for SAE flange 1"	BG2, FKM
VC	(1)		Vorspannventil-Deckel/pre load valve pilot cover NG25, for SAE flange 1 1/4"	BG3+4, FKM
VC	(1)		Vorspannventil-Deckel/pre load valve pilot cover NG32, for SAE flange 1 1/2"	BG5+6, FKM

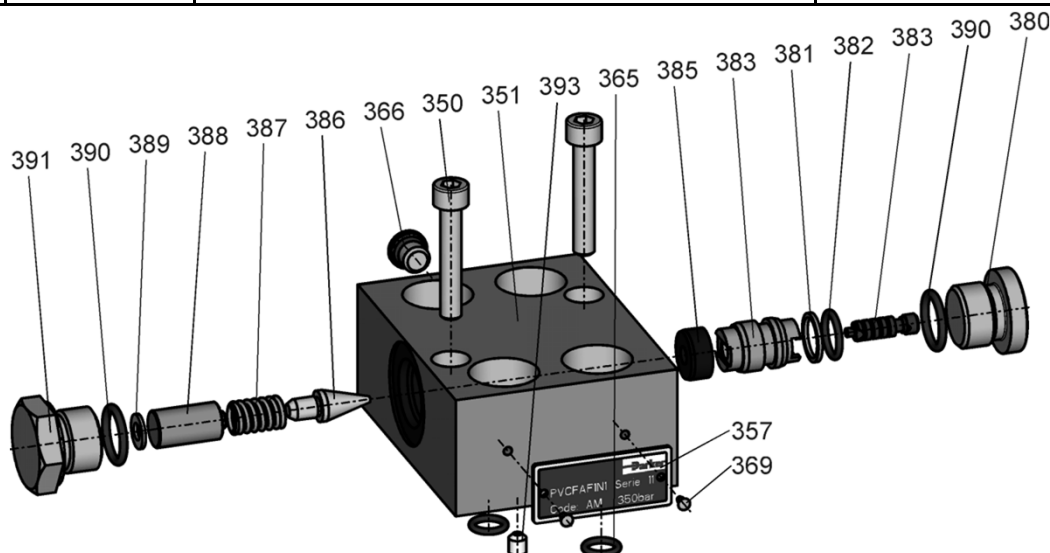
Pos	Stck/ Qty	item number	Beschreibung / description	Bemerkung / remark
303	1		O-Ring 2-214-N552-90, 24,99 x 3,53	BG1, NBR
303	(1)		O-Ring 2-219-N552-90, 32,92 x 3,53	BG2, NBR
303	(1)		O-Ring 2-222-N552-90, 37,69 x 3,53	BG3+4, NBR
303	(1)		O-Ring 2-225-N552-90, 47,22 x 3,53	BG5+6, NBR
303	(1)		O-Ring 2-214-V747-75, 24,99 x 3,53	BG1, FKM
303	(1)		O-Ring 2-219-V747-75, 32,92 x 3,53	BG2, FKM
303	(1)		O-Ring 2-222-V709-90, 37,69 x 3,53	BG3+4, FKM
303	(1)		O-Ring 2-225-V747-75, 47,22 x 3,53	BG5+6, FKM
304	2		Magnetplatte / magnetic plate	BG1+2
304	(2)		Magnetplatte / magnetic plate	BG3+4
304	(2)		Magnetplatte / magnetic plate	BG5+6
305	2		Stopfen / plug VSTI R1/4" ED NBR	NBR, Gew / thr.1
305	(2)		Stopfen / plug VSTI R1/4" ED FPM	FKM, Gew / thr.1
305	(2)		Stopfen / plug VSTI-12 x 1,5-OR-A3C ISO 6149 NBR	NBR, Gew / thr.7, 8
305	(2)		Stopfen / plug VSTI-12 x 1,5-OR-A3C ISO 6149 FPM	FKM, Gew / thr.7, 8
305	(2)		Stopfen / plug 4HP50NS-NBR, 7/16-20 UNF	NBR, Gew / thr.3
305	(2)		Stopfen / plug 4HP50NS-FPM, 7/16-20 UNF	FKM, Gew / thr.3
306	1		Schutzstopfen / plastic cover plug G1/4	Gew / thr. 1 and 4
306	(1)		Schutzstopfen / plastic cover plug 7/16-20 UNF	Gew / thr. 3
306	(1)		Schutzstopfen / plastic cover plug M12 x 1,5	Gew / thr. 7, 8
350	2		Schraube / screw M 6 x 35 DIN 912, 12.9	BG1+2
350	(2)		Schraube / screw M 6 x 50 DIN 912, 12.9	BG3+4
350	(2)		Schraube / screw M 6 x 50 DIN 912, 12.9	BG5+6
352	1		O-Ring	siehe / see SK-VC
353	1		Distanzring / cover ring NG16	BG1+2
353	(1)		Distanzring / cover ring NG25	BG3+4
353	(1)		Distanzring / cover ring NG32	BG5+6
354	1		Stützring / back up ring	siehe / see SK-VC
355	1		Hub- und Volumenverkleinerung / stroke- and volume reducer NG16	BG1+2
355	(1)		Hub- und Volumenverkleinerung / stroke- and volume reducer NG25	BG3+4
355	(1)		Hub- und Volumenverkleinerung / stroke- and volume reducer NG32	BG5+6
356	1		Feder / spring U; 4,0 bar, NG16	BG1+2
356	(1)		Feder / spring U; 4,0 bar, NG25	BG3+4
356	(1)		Feder / spring U; 4,0 bar, NG32	BG5+6
359	1		Ventilkegel / valve poppet C01, NG16	BG1+2
359	(1)		Ventilkegel / valve poppet C01, NG25	BG3+4
359	(1)		Ventilkegel / valve poppet C01, NG32	BG5/6
360	1		Stopfen / plug 1/16" NPTF	
361	2		O-Ring	siehe / see SK-VC
363	1		Ventilhülse / valve sleeve NG16	BG1+2
363	(1)		Ventilhülse / valve sleeve NG25	BG3+4
363	(1)		Ventilhülse / valve sleeve NG32	BG5+6
364	4		Stützring / back up ring	siehe / see SK-VC
365	2		O-Ring	siehe / see SK-VC
367	1		O-Ring	siehe / see SK-VC
368	1		Typenschild / name plate	
369	2		Niet / rivet UNIRIV;U-AF 1932-16485	
392	1		Blende / orifice Ø 1,0; M6 x 6, TUF-LOK coated	
Befestigungsschrauben / mounting bolts				
321	4		Schraube / screw M 10 x 120 DIN 912, 12.9	BG1, Gew / thr.1, 8
321	(4)		Schraube / screw M 12 x 120 DIN 912, 12.9	BG2, Gew / thr.1, 8
321	(4)		Schraube / screw M 12 x 140 DIN 912, 12.9	BG3+4, Gew / thr.1, 8
321	(4)		Scheibe / washer 12 DIN 125 ST	BG3+4, Gew / thr.1, 8
321	(4)		Schraube / screw M 16 x 160 DIN 912, 12.9	BG5+6, Gew / thr.1, 8
321	(4)		Schraube / screw M 14 x 140 DIN 912, 12.9	BG3+4, Gew / thr.4
321	(4)		Schraube / screw 3/8"-16 UNC x 4 3/4"	BG1, Gew / thr.3, 7
321	(4)		Schraube / screw 7/16"-14 UNC x 4 3/4"	BG2, Gew / thr.3, 7
321	(4)		Schraube / screw 1/2"-13 UNC x 5 1/2"	BG3+4, Gew / thr.3, 7
321	(4)		Schraube / screw 5/8"-11 UNC x 6 1/4"	BG5+6, Gew / thr.3, 7

Vorsteuerkopf Vorspannventil / pilot head pre load valve, code PVAPVC20**

Bestellcode für Ersatz-Einsatz / ordering code for replacement pilot head:

PVAP	PV-Zubehör für Druckanschluss / PV accessories for pressure port
VC	Vorsteuerkopf Vorspannventil / pilot head pre load valve
1	Serie PVplus - PV016 - PV023 (BG1)
2	Serie PVplus - PV032 - PV046 (BG2)
3	Serie PVplus - PV063 - PV180 (BG3+4)
5	Serie PVplus - PV270 - PV360 (BG5+6)
N	NBR
V	FKM
20	Konstruktionsstand / design series 20
21	Konstruktionsstand / design series 21
	enthält / includes:

obsolete

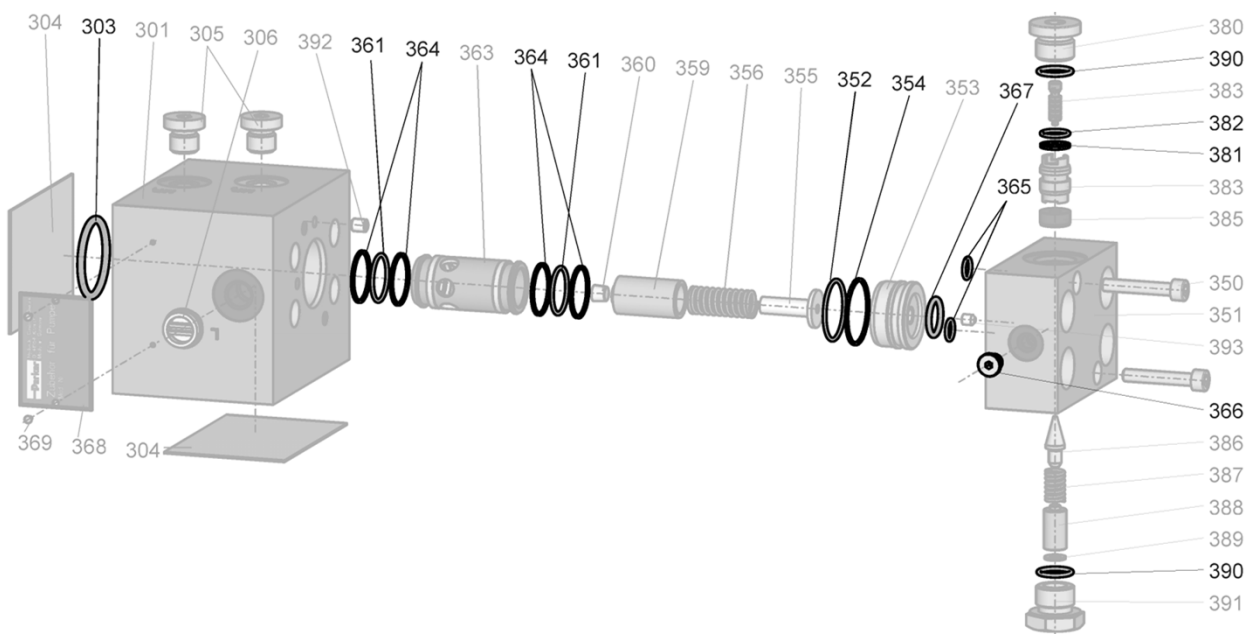


Pos	Stck/ Qty	item number	Beschreibung / description	Bemerkung / remark
350	2		siehe / see PVAPVV..., PVAPVE...	
351	1		Vorspannventil-Deckel/pre load valve pilot cover NG16, for SAE flange 3/4"	BG1
351	(1)		Vorspannventil-Deckel/pre load valve pilot cover NG16, for SAE flange 1"	BG2
351	(1)		Vorspannventil-Deckel/pre load valve pilot cover NG25, for SAE flange 1 1/4"	BG3+4
351	(1)		Vorspannventil-Deckel/pre load valve pilot cover NG32, for SAE flange 1 1/2"	BG5+6
357	1		Typenschild / name plate	
365	2		O-Ring	siehe / see SK-VC
366	1		Stopfen / plug 2HP50NS-NBR, 5/16-24 UNF	NBR
366	(1)		Stopfen / plug 2HP50NS-FKM, 5/16-24 UNF	FKM
369	2		Niet / rivet UNIRIV;U-AF 1932-16485	
380	1		Stopfen / plug	
381	1		Stützring / back up ring 8-013-N300-90; 11,56 x 1,35	NBR
381	(1)		Stützring / back up ring 8-013-V709-90; 11,56 x 1,35	FKM
382	1		O-Ring 2-013-N552-90; 10,82 x 1,78	NBR
382	(1)		O-Ring 2-013-V747-75; 10,82 x 1,78	FKM
383	1		Steuerteile / control parts (A000037+45032554)	
385	1		Ventilsitz DNL SITZ-R4 / valve seat DNL size R4	
386	1		Ventilkegel DNL / valve poppet DNL	
387	1		Feder / spring	
388	1		Distanzstück / distance insert, NG25	BG3+4
388	(1)		Distanzstück / distance insert, NG32	BG5+6
389	1		Scheibde / washer 10 x 15 x 1 DIN988	
390	2		O-Ring 6-349-N552-90; 15,40 x 2,10	NBR
390	(2)		O-Ring 6-349-V747-75; 15,40 x 2,10	FKM
391	1		Federgehäuse / spring cover	
393	1		Blende / orifice Ø 0,6; M5 x 6, TUF-LOK	BG1
393	(1)		Blende / orifice Ø 0,8; M5 x 6, TUF-LOK	BG2
393	(1)		Blende / orifice Ø 1,0; M5 x 6, TUF-LOK	BG3-6

seal kit for pre load valve PVAPVV..., design series 20, code SK-VC20**

Bestellcode für Ersatz-Dichtungssatz / ordering code for replacement seal kit:

SK-	Dichtungssatz / seal kit	
VC	Vorspann-Ventil-Cartridgeeinsatz / pre load valve cartridge insert	
1	Serie PVplus - PV016 - PV046 (BG1+2)	
3	Serie PVplus - PV063 - PV180 (BG3+4)	
5	Serie PVplus - PV270 - PV360 (BG5+6)	
N	NBR	obsolete
V	FKM	
20	Konstruktionsstand / design series 20	
	enthält / includes:	

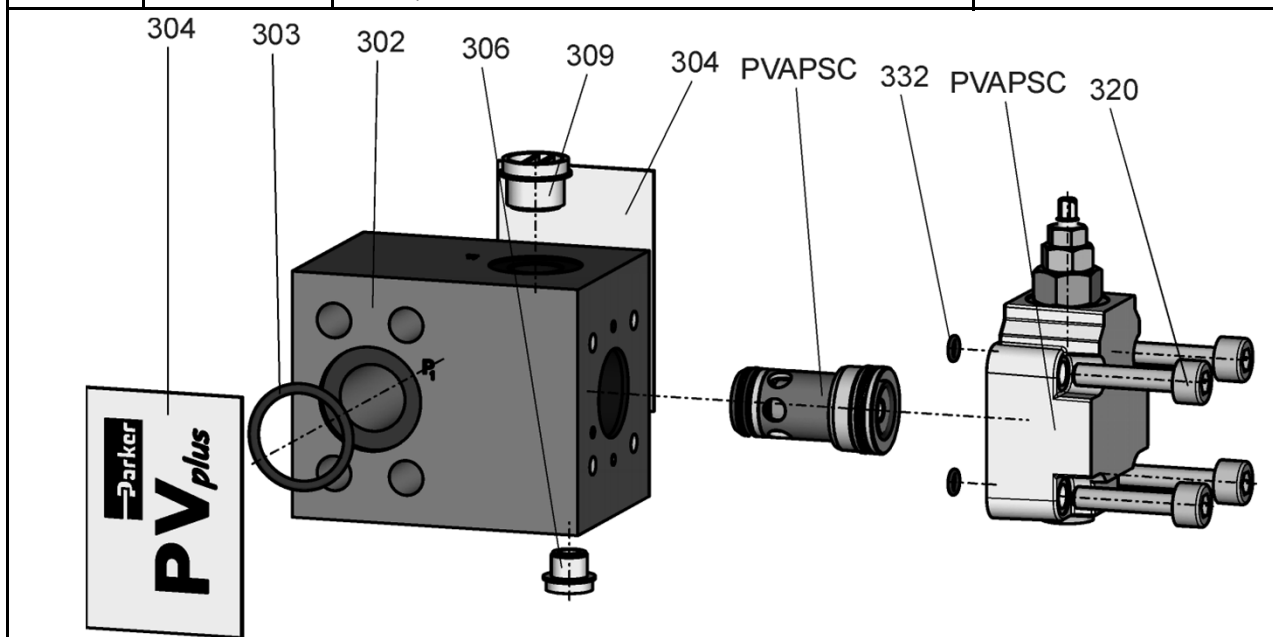


Pos	Stck/ Qty	item number	Beschreibung / description	Bemerkung / remark
303	1		o ring 2-214-N552-90, 24,99 x 3,53	BG1, NBR
303	(1)		o ring 2-219-N552-90, 32,92 x 3,53	BG2, NBR
303	(1)		o ring 2-222-N552-90, 37,69 x 3,53	BG3+4, NBR
303	(1)		o ring 2-225-N552-90, 47,22 x 3,53	BG5+6, NBR
303	(1)		o ring 2-214-V747-75, 24,99 x 3,53	BG1, FKM
303	(1)		o ring 2-219-V709-90, 32,92 x 3,53	BG2, FKM
303	(1)		o ring 2-222-V709-90, 37,69 x 3,53	BG3+4, FKM
303	(1)		o ring 2-225-V747-75, 47,22 x 3,53	BG5+6, FKM
352	1		o ring 2-024-N552-90; 28,30 x 1,78	BG1+2, NBR
352	(1)		o ring 2-024-V747-75; 28,30 x 1,78	BG1+2, FKM
352	(1)		o ring 2-129-N552-90; 39,34 x 2,62	BG3+4, NBR
352	(1)		o ring 2-129-V747-75; 39,34 x 2,62	BG3+4, FKM
352	(1)		o ring 2-139-N552-90, 55,25 x 2,62	BG5+6, NBR
352	(1)		o ring 2-139-V747-75, 55,25 x 2,62	BG5+6, FKM
354	1		Stützring / back up ring -029,4X1,0-PTFE-geschli.	BG1+2, NBR / FKM
354	(1)		Stützring / back up ring -045X040,8X1,1-P0WE1	BG3+4, NBR / FKM
354	(1)		Stützring / back up ring -060X055,8X1,1-P0WE1	BG5+6, NBR / FKM
361	2		O-Ring 2-020-N674-70; 21,95 x 1,78	BG1+2, NBR
361	(2)		O-Ring 2-020-V747-75; 21,95 x 1,78	BG1+2, FKM
361	(2)		O-Ring 2-122-N552-90; 28,24 x 2,62	BG3+4, NBR
361	(2)		O-Ring 2-122-V747-75; 28,24 x 2,62	BG3+4, FKM
361	(2)		O-Ring 2-129-N552-90, 39,34 x 2,62	BG5+6, NBR
361	(2)		O-Ring 2-129-V747-75, 39,34 x 2,62	BG5+6, FKM

Pos	Stck/ Qty	item number	Beschreibung / description	Bemerkung / remark
364	4		Stützring / back up ring 25X22,4X1,1-P0WE1	BG1+2, NBR / FKM
364	4		Stützring / back up ring 34X29,9X1,1-P0WE1	BG3+4, NBR / FKM
364	(4)		Stützring / back up ring 45X40,8X1,1-P0WE1	BG5+6, NBR / FKM
365	2		O-Ring 2-011-N552-90; 7,65 x 1,78	BG1+2, NBR
365	(2)		O-Ring 2-011-V747-75; 7,65 x 1,78	BG1+2, FKM
365	(2)		O-Ring 2-012-N552-90; 9,25 x 1,78	BG3-BG6, NBR
365	(2)		O-Ring 2-012-V747-75; 9,25 x 1,78	BG3-BG6, FKM
366	1		pipe plug 2HP50NS-NBR, 5/16-24 UNF	NBR
366	(1)		pipe plug 2HP50NS-FPM, 5/16-24 UNF	FKM
367	1		O-Ring 2-115-N552-90; 17,12 X 2,62	BG1+2, NBR
367	(1)		O-Ring 2-115-V747-75; 17,12 X 2,62	BG1+2, FKM
367	(1)		O-Ring 2-213-N552-90; 23,39 x 3,53	BG3+4, NBR
367	(1)		O-Ring 2-213-V747-75; 23,39 x 3,53	BG3+4, FKM
367	(1)		O-Ring 2-218-N552-90; 31,34 x 3,53	BG5+6, NBR
367	(1)		O-Ring 2-218-V747-75; 31,34 x 3,53	BG5+6, FKM
381	1		Stützring / back up ring 8-013-N300-90; 11,56 x 1,35	NBR
381	(1)		Stützring / back up ring 8-013-V709-90; 11,56 x 1,35	FKM
382	1		O-Ring 2-013-N552-90; 10,82 x 1,78	NBR
382	(1)		O-Ring 2-013-V747-75; 10,82 x 1,78	FKM
390	2		O-Ring 6-349-N552-90; 15,40 x 2,10	NBR
390	(2)		O-Ring 6-349-V747-75; 15,40 x 2,10	FKM

Schnell-Entlastungsventil-Block / quick unload valve manifold, code PVAPSE*20, metric**

Bestellcode für Ersatz-Block / ordering code for replacement manifold:		
PVAP	PV-Zubehör für Druckanschluss / PV accessories for pressure port	
SE	Schnell-Entlastungsventil-Block / quick unload valve manifold	
1	Serie PVplus - PV016 - PV023 (BG1)	
2	Serie PVplus - PV032 - PV046 (BG2)	
3	Serie PVplus - PV063 - PV092 (BG3)	
4	Serie PVplus - PV140 - PV180 (BG4)	
5	Serie PVplus - PV270 - PV360 (BG5/6)	
1	Gewinde/Thread: METR; Anschlüsse/ports: BSPP	obsolete
3	Gewinde/Thread: UNC; Anschlüsse / ports: BSPP	obsolete
7	Gewinde/Thread: UNC ; Anschlüsse / ports: ISO6149	obsolete
8	Gewinde/Thread: METR; Anschlüsse/ports: ISO6149	obsolete
N	NBR	
V	FKM	
20	Konstruktionsstand / design series 20	
	enthält / includes:	



Pos	Stck/Qty	item number	Beschreibung / description	Bemerkung / remark
302	1		Block / manifold BG1, METR, BSPP	PVAPSE11...
302	(1)		Block / manifold BG2, METR, BSPP	PVAPSE21...
302	(1)		Block / manifold BG3 + 4, METR, BSPP	PVAPSE31..., PVAPSE41...
302	(1)		Block / manifold BG5/6, METR, BSPP	PVAPSE51...
302	(1)		Block / manifold BG1, METR, ISO6149	PVAPSE18...
302	(1)		Block / manifold BG2, METR, ISO6149	PVAPSE28...
302	(1)		Block / manifold BG3/4, METR, ISO6149	PVAPSE38..., PVAPSE48...
302	(1)		Block / manifold BG5/6, METR, ISO6149	PVAPSE58...
302	1		Block / manifold BG1, UNC, BSPP	PVAPSE13...
302	(1)		Block / manifold BG2, UNC, BSPP	PVAPSE23...
302	(1)		Block / manifold BG3/4, UNC, BSPP	PVAPSE33..., PVAPSE43...
302	(1)		Block / manifold BG5/6, UNC, BSPP	PVAPSE53...
302	(1)		Block / manifold BG1, UNC, ISO6149	PVAPSE17...
302	(1)		Block / manifold BG2, UNC, ISO6149	PVAPSE27...
302	(1)		Block / manifold BG3/4, UNC, ISO6149	PVAPSE37..., PVAPSE47...
302	(1)		Block / manifold BG5/6, UNC, ISO6149	PVAPSE57...

Pos	Stck/ Qty	item number	Beschreibung / description	Bemerkung / remark
SC	1		Schnell-Entlastungsventil / quick unload valve cartridge NG16	BG1 - BG4, NBR
SC	(1)		Schnell-Entlastungsventil / quick unload valve cartridge NG25	BG5+6, NBR
SC	(1)		Schnell-Entlastungsventil / quick unload valve cartridge NG16	BG1 - BG4, FKM
SC	(1)		Schnell-Entlastungsventil / quick unload valve cartridge NG25	BG5+6, FKM
303	1		O-Ring 2-214-N552-90, 24,99 x 3,53	BG1, NBR
303	(1)		O-Ring 2-219-N552-90, 32,92 x 3,53	BG2, NBR
303	(1)		O-Ring 2-222-N552-90, 37,69 x 3,53	BG3+4, NBR
303	(1)		O-Ring 2-225-N552-90, 47,22 x 3,53	BG5+6, NBR
303	(1)		O-Ring 2-214-V747-75, 24,99 x 3,53	BG1, FKM
303	(1)		O-Ring 2-219-V709-90, 32,92 x 3,53	BG2, FKM
303	(1)		O-Ring 2-222-V709-90, 37,69 x 3,53	BG3+4, FKM
303	(1)		O-Ring 2-225-V747-75, 47,22 x 3,53	BG5+6, FKM
304	2		Magnetplatte / magnetic plate	BG1+2
304	(2)		Magnetplatte / magnetic plate	BG3+4
304	(2)		Magnetplatte / magnetic plate	BG5+6
306	1		Schutzstopfen / plastic cover plug G1/4	Gew / thr. 1
306	1		Schutzstopfen / plastic cover 7/16-20 UNF	Gew / thr. 3
306	(1)		Schutzstopfen / plastic cover plug M12 x 1,5	Gew / thr. 7, 8
309	1		Schutzstopfen / plastic cover plug G 1/2	BG1+2; Gew / thr. 1 and 4
309	(1)		Schutzstopfen / plastic cover plug G 3/4	BG3+4; Gew / thr. 1 and 4
309	(1)		Schutzstopfen / plastic cover plug G 1	BG5/6, Gew. / thr. 1
309	1		Schutzstopfen / plastic cover 7/8-14 UNF	BG1+2, Gew / thr.3
309	(1)		Schutzstopfen / plastic cover 1 1/16-12 UNF	BG3+4, Gew / thr.3
309	(1)		Schutzstopfen / plastic cover 15/16-12 UNF	BG5+6, Gew / thr.3
309	(1)		Schutzstopfen / plastic cover plug M 22 x 1,5	BG1+2; Gew / thr. 7, 8
309	(1)		Schutzstopfen / plastic cover plug M 27 x 2	BG3+4; Gew / thr. 7, 8
309	(1)		Schutzstopfen / plastic cover plug M 33 x 2	BG5/6, Gew. / thr. 7, 8
320	4		Schraube / screw M 8 x 40 DIN 912, 12.9	BG1 - BG4, Gew / thr.1, 8
320	(4)		Schraube / screw M 12 x 50 DIN 912, 12.9	BG5/6, Gew / thr.1, 8
320	4		Schraube / screw 5/16"-18 x 1 1/2", 12.9	BG1 - BG4, Gew / thr.3, 7
320	(4)		Schraube / screw 1/2"-13 x 2", 12.9	BG5+6, Gew / thr.3, 7
332	2		O-Ring	siehe / see SK-SC

Schnell-Entlastungsventil-Einsatz / quick unload valve cartridge insert - PVAPSC*20**

Bestellcode für Ersatz-Einsatz / ordering code for replacement pilot head:

PVAP

SC

016

025

N

V

20

PV-Zubehör für Druckanschluss / PV accessories for pressure port

Schnell-Entlastungsventil / quick unload valve cartridge

Serie PVplus - PV016 - PV046 (BG1-BG4)

Serie PVplus - PV270 - PV360 (BG5+6)

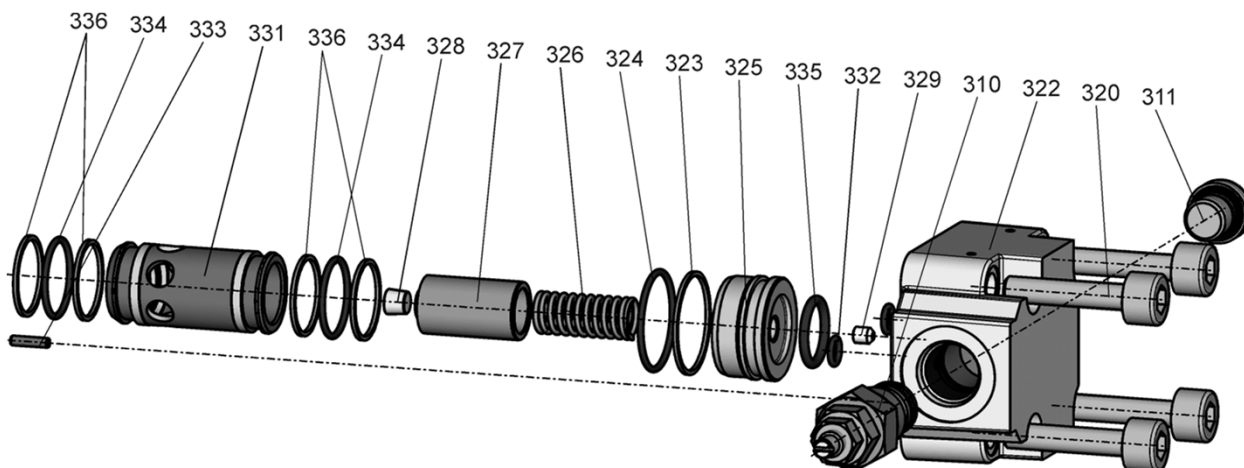
NBR

FKM

Konstruktionsstand / design series 20

enthält / includes:

obsolete

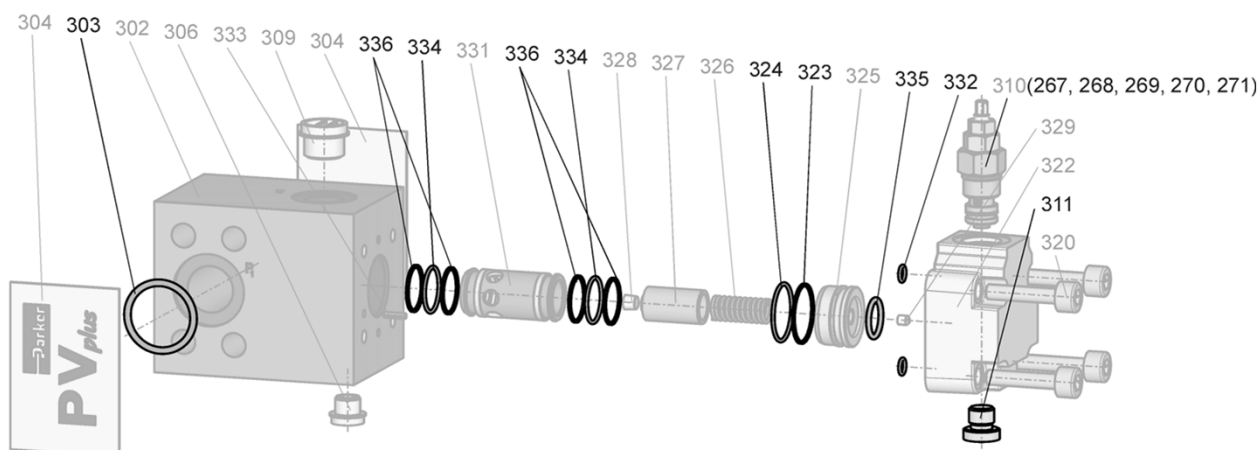


Pos	Stck/ Qty	item number	Beschreibung / description	Bemerkung / remark
310	1		Druck-Pilotcartridge / pressure pilot cartridge 350 bar, NBR	NBR
310	(1)		Druck-Pilotcartridge / pressure pilot cartridge 350 bar, FKM	FKM
311	1		pipe plug G 1/4 VSTI	siehe / see SK-SC
320	4		siehe / see PVAPSE..., PVAPVE...	
322	1		Deckel Pilotventil / cover with pilot valve cavity - NG16/0	BG1-BG4
322	(1)		Deckel Pilotventil / cover with pilot valve cavity - NG25/0	BG5+6
323	1		Stützring / back up ring	siehe / see SK-SC
324	1		O-Ring, cover ring, outside	siehe / see SK-SC
325	1		Distanzring / cover ring NG16	BG1-BG4
325	(1)		Distanzring / cover ring NG25	BG5+6
326	1		Feder / spring U; 4,0 bar, NG16	BG1-BG4
326	(1)		Feder / spring U; 4,0 bar, NG25	BG5+6
327	1		Ventilkegel / valve poppet C01, NG16	BG1-BG4
327	(1)		Ventilkegel / valve poppet C01, NG25	BG5+6
328	1		Blende / orifice Ø 1,3; 1/16" NPT	
329	1		Blende / orifice Ø 0,9; M5 x 6	
331	1		Ventilhülse / valve sleeve NG16	BG1-BG4
331	(1)		Ventilhülse / valve sleeve NG25	BG5+6
332	2		O-Ring	siehe / see SK-SC
333	1		Kerbstift / locator pin 3 x 12 DIN 1474	BG1-BG4
333	(1)		Kerbstift / locator pin 4 x 12 DIN 1474	BG5+6
334	2		O-Ring	siehe / see SK-SC
335	1		O-Ring	siehe / see SK-SC
336	4		Stützring / backup ring	siehe / see SK-SC

**Dichtungssatz für Schnell-Entlastungsventil-Einsatz /
seal kit for quick unload valve cartridge insert SK-SC****20**

Bestellcode für Ersatz-Dichtungssatz / ordering code for replacement seal kit:

SK-	PV-Zubehör für Druckanschluss / PV accessories for pressure port	
SC	Schnell-Entlastungsventil / quick unload valve cartridge	
016	Serie PVplus - PV016 - PV046 (BG1-BG4)	
025	Serie PVplus - PV270 - PV360 (BG5+6)	
N	NBR	obsolete
V	FKM	
20	Konstruktionsstand / design series 20	
	enthält / includes:	



Pos	Stck/ Qty	item number	Beschreibung / description	Bemerkung / remark
267	1		O-Ring 2-009-N552-90; 5,28 x 1,78	NBR
267	(1)		O-Ring 2-009-V747-75; 5,28 x 1,78	FKM
268	1		O-Ring 3-905-N552-90; 10,52 x 1,83	NBR
268	(1)		O-Ring 3-905-V709-90; 10,52 x 1,83	FKM
269	1		O-Ring 6-129-N552-90; 13,29 x 1,78	NBR
269	(1)		O-Ring 6-129-V709-90; 13,29 x 1,78	FKM
270	1		O-Ring 3-908-N552-90; 16,36 x 2,21	NBR
270	(1)		O-Ring 3-908-V709-90; 16,36 x 2,21	FKM
271	1		Stützring / back up ring 8-014,1-N300-90; 14,00 x 1,35	NBR
271	(1)		Stützring / back up ring 8-014,1-V709-90; 14,00 x 1,35	FKM
303	1		O-Ring 2-214-N552-90, 24,99 x 3,53	NBR, BG 1
303	(1)		O-Ring 2-219-N552-90, 32,92 x 3,53	NBR, BG 2
303	(1)		O-Ring 2-222-N552-90, 37,69 x 3,53	NBR, BG 3 + 4
303	(1)		O-Ring 2-225-N552-90, 47,22 x 3,53	NBR, BG 5
303	(1)		O-Ring 2-214-V747-75, 24,99 x 3,53	FKM, BG 1
303	(1)		O-Ring 2-219-V747-75, 32,92 x 3,53	FKM, BG 2
303	(1)		O-Ring 2-222-V709-90 , 37,69 x 3,53	FKM, BG 3 + 4
303	(1)		O-Ring 2-225-V747-75, 47,22 x 3,53	FKM, BG 5
311	1		pipe plug VSTI R1/4" ED NBR	NBR
311	(1)		pipe plug VSTI R1/4" ED FPM	FKM
323	1		Stützring / back up ring -029,4X1,0-PTFE-geschli.	BG1-BG4
323	1		Stützring / back up ring -045X040,8X1,1-P0WE1	BG5
324	1		O-Ring 2-024-N552-90; 28,30 x 1,78	BG1-BG4, NBR
324	(1)		O-Ring 2-024-V747-75; 28,30 x 1,78	BG1-BG4, FKM
324	1		O-Ring 2-129-N552-90; 39,34 x 2,62	BG5 NBR
324	(1)		O-Ring 2-129-V747-75; 39,34 x 2,62	BG5 FKM
332	2		O-Ring 2-010-N552-90; 6,07 x 1,78	BG1-BG4, NBR
332	(2)		O-Ring 2-010-V747-75; 6,07 x 1,78	BG1-BG4, FKM
332	2		O-Ring 2-012-N552-90; 9,25 x 1,78	BG5 NBR
332	(2)		O-Ring 2-012-V709-90; 9,25 x 1,78	BG5 FKM

Pos	Stck/ Qty	item number	Beschreibung / description	Bemerkung / remark
334	2		O-Ring 2-020-N674-70; 21,95 x 1,78	BG1-BG4, NBR
334	(2)		O-Ring 2-020-V747-75; 21,95 x 1,78	BG1-BG4, FKM
334	2		O-Ring 2-122-N552-90; 28,24 x 2,62	BG5 NBR
334	(2)		O-Ring 2-122-V747-75; 28,24 x 2,62	BG5 FKM
335	1		O-Ring 2-115-N552-90; 17,12 x 2,62	BG1-BG4, NBR
335	(1)		O-Ring 2-115-V747-75; 17,12 x 2,62	BG1-BG4, FKM
335	1		O-Ring 2-213-N552-90; 23,39 x 3,53	BG5 NBR
335	(1)		O-Ring 2-213-V747-75; 23,39 x 3,53	BG5 FKM
336	4		Stützring / back up ring 25X22,4X1,1-P0WE1	BG1-BG4, FKM
336	4		Stützring / back up ring 34X29,9X1,1-P0WE1	BG5
pos. 267 to 271: Dichtungen für Druck-Pilotcartridge, siehe folgendes Blatt PVACPC / seals for pressure pilot cartridge, see following sheet PVACPC				

Druck-Pilotcartridge / pressure pilot cartridge - PVACPC35**

Bestellcode für Ersatzventil / ordering code for replacement valve:

PVAC

PC35

N

V

S

PV-Zubehör für Regler / PV accessories for compensators

Druck-Pilotcartridge / pressure pilot cartridge, 350 bar

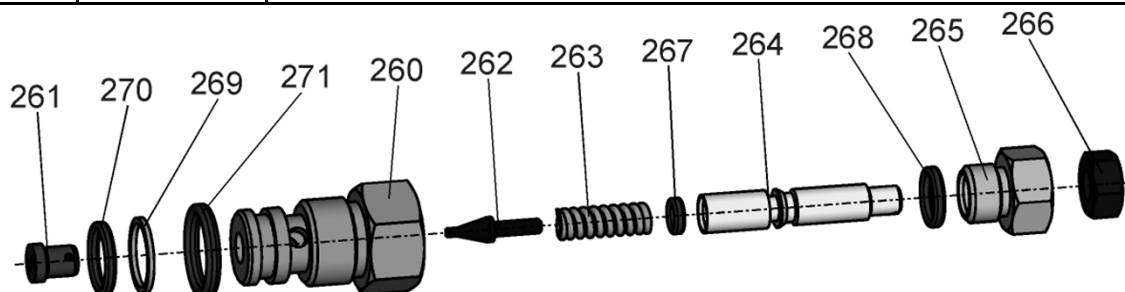
NBR

obsolete

FKM

**Einstellung mit Schraube und Kontermutter /
adjustment with screw and lock nut**

enthält / includes:

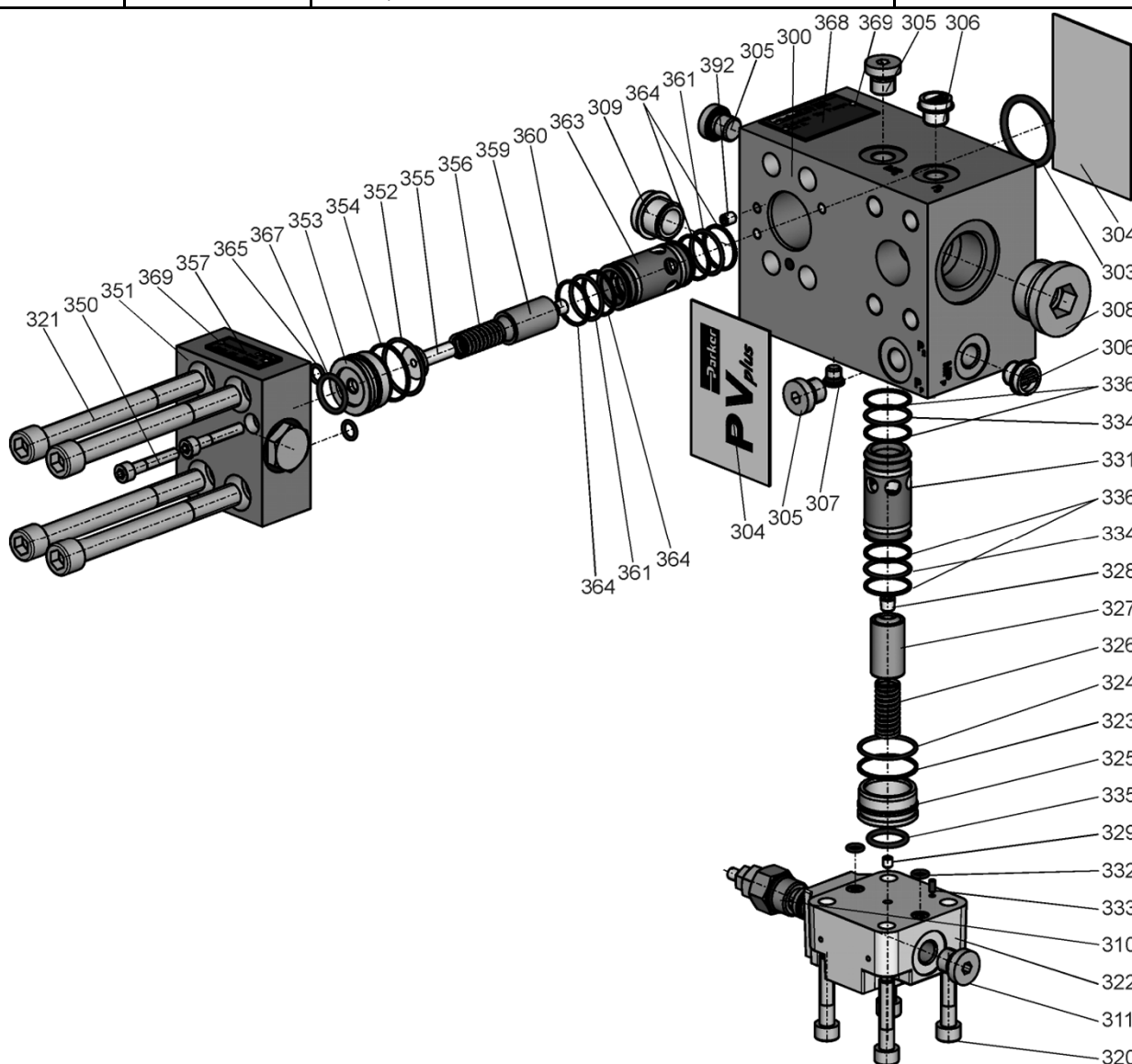


Pos	Stck/ Qty	item number	Beschreibung / description	Bemerkung / remark
		PVACPC35NS	Druck-Pilotcartridge / pressure pilot cartridge, 350 bar	obsolete
260	1		Gehäuse Druckcartridge / body pressure pilot cartridge	
261	1		Ventilsitz / valve seat 350 bar	
262	1		Ventilkegel / valve poppet	
263	1		Druckfeder / spring 350 bar	
264	1		Einstellspindel / adjustment spindel	
265	1		Einstellstopfen / adjustment pipe plug	
266	1		Mutter / lock nut 5/16"-24 UNC, 6S, AEH, similar to DIN 936	
267	1		O-Ring 2-009-N552-90; 5,28 x 1,78	NBR
268	1		O-Ring 3-905-N552-90; 10,52 x 1,83	NBR
269	1		Stützring / back ring 1-163-N300-90; 13,72 x 1,35	NBR
270	1		O-Ring 6-129-N552-90; 13,29 x 1,78	NBR
271	1		O-Ring 3-908-N552-90; 16,36 x 2,21	NBR
		PVACPC35VS	Druck-Pilotcartridge / pressure pilot cartridge, 350 bar	
260	1		Gehäuse Druckcartridge / body pressure pilot cartridge	
261	1		Ventilsitz / valve seat 350 bar	
262	1		Ventilkegel / valve poppet	
263	1		Druckfeder / spring 350 bar	
264	1		Einstellspindel / adjustment spindel	
265	1		Einstellstopfen / adjustment pipe plug	
266	1		Mutter / lock nut 5/16"-24 UNC, 6S, AEH, similar to DIN 936	
267	(1)		O-Ring 2-009-V747-75; 5,28 x 1,78	FKM
268	(1)		O-Ring 3-905-V709-90; 10,52 x 1,83	FKM
269	(1)		Stützring / back ring 1-163-V709-90; 13,72 x 1,35	FKM
270	(1)		O-Ring 6-129-V709-90; 13,29 x 1,78	FKM
271	(1)		O-Ring 3-908-V709-90; 16,36 x 2,21	FKM

**Vorspann- und Schnell-Entlastungsventil-Block /
pre load and quick unload valve manifold - Code PVAPVE***20**

Bestellcode für Ersatz-Block / ordering code for replacement manifold:

PVAP	PV-Zubehör für Druckanschluss / PV accessories for pressure port	
VE	Vorspann- und Schnell-Entlastungsventil-Block/pre load and quick unload valve manifold	
1	Serie PVplus - PV016 - PV023 (BG1)	
2	Serie PVplus - PV032 - PV046 (BG2)	
3	Serie PVplus - PV063 - PV092 (BG3)	obsolete
4	Serie PVplus - PV140 - PV180 (BG4)	(PV063 - PV180)
5	Serie PVplus - PV270 - PV360 (BG5/6)	obsolete
1	Gewinde / Thread: METR; Anschlüsse / ports: BSPP	obsolete
3	Gewinde / Thread: UNC; Anschlüsse / ports: BSPP	obsolete
4	Gewinde / Thread: METR M14; Anschlüsse / ports:	obsolete
7	Gewinde / Thread: UNC; Anschlüsse / ports: ISO6149	obsolete
8	Gewinde / Thread: METR; Anschlüsse / ports: ISO6149	obsolete
N	NBR	
V	FKM	
20	Konstruktionsstand / design series 20	
	enthält / includes:	



Pos	Stck/ Qty	item number	Beschreibung / description	Bemerkung / remark
300	1		Block / manifold BG1, METR, BSPP	PVAPVE11...
300	(1)		Block / manifold BG2, METR, BSPP	PVAPVE21...
300	(1)		Block / manifold BG3/4, METR M12, BSPP	PVAPVE31..., PVAPVE41...
300	(1)		Block / manifold BG5/6, METR, BSPP	PVAPVE51...
300	(1)		Block / manifold BG3/4, METR M14, BSPP	PVAPVE34..., PVAPVE44...
300	(1)		Block / manifold BG1, METR, ISO 6149	PVAPVE18...
300	(1)		Block / manifold BG2, METR, ISO 6149	PVAPVE28...
300	(1)		Block / manifold BG3/4, METR, ISO 6149	PVAPVE38..., PVAPVE48...
300	(1)		Block / manifold BG5/6, METR, ISO 6149	PVAPVE58...
300	(1)		Block / manifold BG1, UNC, UNF	PVAPVE13...
300	(1)		Block / manifold BG2, UNC, UNF	PVAPVE23...
300	(1)		Block / manifold BG3/4, UNC, UNF	PVAPVE33..., PVAPVE43...
300	(1)		Block / manifold BG5/6, UNC, UNF	PVAPVE53...
300	(1)		Block / manifold BG1, UNC, ISO6149	PVAPVE17...
300	(1)		Block / manifold BG2, UNC, ISO6149	PVAPVE27...
300	(1)		Block / manifold BG3/4, UNC, ISO6149	PVAPVE37..., PVAPVE47...
300	(1)		Block / manifold BG5/6, UNC, ISO6149	PVAPVE57...
Ventileinsätze / valve inserts				
	1		Schnell-Entlastungsventil / quick unload valve cartridge NG16	BG1 - BG4, NBR
	(1)		Schnell-Entlastungsventil / quick unload valve cartridge NG25	BG5+6, NBR
	(1)		Schnell-Entlastungsventil / quick unload valve cartridge NG16	BG1 - BG4, FKM
	(1)		Schnell-Entlastungsventil / quick unload valve cartridge NG25	BG5+6, FKM
	(1)		Vorspannventil-Deckel/pre load valve pilot cover NG16, for SAE flange 3/4"	BG1, NBR
	(1)		Vorspannventil-Deckel/pre load valve pilot cover NG16, for SAE flange 1"	BG2, NBR
	(1)		Vorspannventil-Deckel/pre load valve pilot cover NG25, for SAE flange 1 1/4"	BG3+4, NBR
	(1)		Vorspannventil-Deckel/pre load valve pilot cover NG32, for SAE flange 1 1/2"	BG5+6, NBR
	(1)		Vorspannventil-Deckel/pre load valve pilot cover NG16, for SAE flange 3/4"	BG1, FKM
	(1)		Vorspannventil-Deckel/pre load valve pilot cover NG16, for SAE flange 1"	BG2, FKM
	(1)		Vorspannventil-Deckel/pre load valve pilot cover NG25, for SAE flange 1 1/4"	BG3+4, FKM
	(1)		Vorspannventil-Deckel/pre load valve pilot cover NG32, for SAE flange 1 1/2"	BG5+6, FKM
Einzelteile / spare parts				
303	1		O-Ring 2-214-N552-90, 24,99 x 3,53	BG1, NBR
303	(1)		O-Ring 2-219-N552-90, 32,92 x 3,53	BG2, NBR
303	(1)		O-Ring 2-222-N552-90, 37,69 x 3,53	BG3+4, NBR
303	(1)		O-Ring 2-225-N552-90, 47,22 x 3,53	BG5+6, NBR
303	(1)		O-Ring 2-214-V747-75, 24,99 x 3,53	BG1, FKM
303	(1)		O-Ring 2-219-V747-75, 32,92 x 3,53	BG2, FKM
303	(1)		O-Ring 2-222-V709-90, 37,69 x 3,53	BG3+4, FKM
303	(1)		O-Ring 2-225-V747-75, 47,22 x 3,53	BG5+6, FKM
304	2		Magnetplatte / magnetic plate	BG1+2
304	(2)		Magnetplatte / magnetic plate	BG3+4
304	(2)		Magnetplatte / magnetic plate	BG5+6
305	3		Stopfen / plug VSTI R1/4" ED NBR	NBR, Gew / thr.1
305	(3)		Stopfen / plug VSTI R1/4" ED FKM	FKM, Gew / thr.1
305	(3)		Stopfen / plug VSTI-12 x 1,5-OR-A3C ISO 6149 NBR	NBR, Gew / thr.7, 8
305	(3)		Stopfen / plug VSTI-12 x 1,5-OR-A3C ISO 6149 FKM	FKM, Gew / thr.7, 8
305	(2)		Stopfen / plug 4HP50NS-NBR, 7/16-20 UNF	NBR, Gew / thr.3
305	(2)		Stopfen / plug 4HP50NS-FPM, 7/16-20 UNF	FKM, Gew / thr.3
306	2		Schutzstopfen / plastic cover plug G1/4	Gew / thr. 1 and 4
306	(2)		Schutzstopfen / plastic cover plug M12 x 1,5	Gew / thr. 7, 8
306	(1)		Schutzstopfen / plastic cover plug 7/16-20 UNF	Gew / thr. 3
307	1		Stopfen / plug 2HP50NS-NBR, 5/16-24 UNF	NBR
307	(1)		Stopfen / plug 2HP50NS-FKM, 5/16-24 UNF	FKM
308	1		Stopfen / plug VSTI R3/4" ED NBR	NBR, BG 1, Gew / thr.1, 4
308	(1)		Stopfen / plug VSTI R3/4" ED FKM	FKM, BG 1, Gew / thr.1, 4
308	(1)		Stopfen / plug VSTI R1" ED NBR	NBR, BG 2, Gew / thr.1, 4
308	(1)		Stopfen / plug VSTI R1" ED FKM	FKM, BG 2, Gew / thr.1, 4
308	(1)		Stopfen / plug VSTI R1 1/4" ED NBR	NBR, BG 3/4, Gew / thr.1, 4
308	(1)		Stopfen / plug VSTI R1 1/4" ED FKM	FKM, BG 3/4, Gew / thr.1, 4
308	(1)		Stopfen / plug VSTI R1 1/2" ED NBR	NBR, BG 5, Gew / thr.1, 4
308	(1)		Stopfen / plug VSTI R1 1/2" ED FKM	FKM, BG 5, Gew / thr.1, 4

Pos	Stck/ Qty	item number	Beschreibung / description	Bemerkung / remark
308	(1)		Stopfen / plug VSTI-27 x 2-OR-A3C ISO 6149 NBR	NBR, BG 1, Gew / thr.7, 8
308	(1)		Stopfen / plug VSTI-27 x 2-OR-A3C ISO 6149 FKM	FKM, BG 1, Gew / thr.7, 8
308	(1)		Stopfen / plug VSTI-33 x 2-OR-A3C ISO 6149 NBR	NBR, BG 2, Gew / thr.7, 8
308	(1)		Stopfen / plug VSTI-33 x 2-OR-A3C ISO 6149 FKM	FKM, BG 2, Gew / thr.7, 8
308	(1)		Stopfen / plug VSTI-42 x 2-OR-A3C ISO 6149 NBR	NBR, BG 3/4, Gew / thr.7, 8
308	(1)		Stopfen / plug VSTI-42 x 2-OR-A3C ISO 6149 FKM	FKM, BG 3/4, Gew / thr.7, 8
308	(1)		Stopfen / plug VSTI-48 x 2-OR-A3C ISO 6149 NBR	NBR, BG 5, Gew / thr.7, 8
308	(1)		Stopfen / plug VSTI-48 x 2-OR-A3C ISO 6149 FKM	FKM, BG 5, Gew / thr.7, 8
308	(1)		Stopfen / plug 12HP50NS-NBR, 1 1/16-12 UNF	NBR, BG 1, Gew / thr.3
308	(1)		Stopfen / plug 12HP50NS-FPM, 1 1/16-12 UNF	FKM, BG 1, Gew / thr.3
308	(1)		Stopfen / plug 16HP50NS-NBR, 1 5/16-12 UNF	NBR, BG 2, Gew / thr.3
308	(1)		Stopfen / plug 16HP50NS-FPM, 1 5/16-12 UNF	FKM, BG 2, Gew / thr.3
308	(1)		Stopfen / plug 20HP50NS-NBR, 1 5/8-12 UNF	NBR, BG 3/4, Gew / thr.3
308	(1)		Stopfen / plug 20HP50NS-FPM, 1 5/8-12 UNF	FKM, BG 3/4, Gew / thr.3
308	(1)		Stopfen / plug 24HP50NS-NBR, 1 7/8-12 UNF	NBR, BG 5, Gew / thr.3
308	(1)		Stopfen / plug 24HP50NS-FPM, 1 7/8-12 UNF	FKM, BG 5, Gew / thr.3
309	1		Schutzstopfen / plastic cover plug G 1/2	BG1+2; Gew / thr. 1 and 4
309	(1)		Schutzstopfen / plastic cover plug G 3/4	BG 3-5, Gew / thr. 1 and 4
309	(1)		Schutzstopfen / plastic cover plug M 22 x 1,5	BG1+2; Gew / thr. 7, 8
309	(1)		Schutzstopfen / plastic cover plug M 27 x 2	BG 3-5, Gew / thr. 7, 8
309	(1)		Schutzstopfen / plastic cover 7/8-14 UNF	BG1+2, Gew / thr.3
309	(1)		Schutzstopfen / plastic cover 1 1/16-12 UNF	BG3-5, Gew / thr.3
310	1		max. pressure pilot valve for quick unload valve	siehe/see PVACPC
311	1		Stopfen / plug G 1/4 VSTI, quick unload valve	siehe/see SK-SC
320	4		Schraube / screw M 8 x 40 DIN 912, 12.9	BG1 - BG4, METR
320	(4)		Schraube / screw M 12 x 50 DIN 912, 12.9	BG5/6, METR
320	(4)		Zylinderschraube 5/16"-18 x 1 1/2" DIN 912, 12.9	Baugrößen 1 bis 4, UNC
320	(4)		Zylinderschraube 1/2"-13 x 2" DIN 912, 12.9	Baugröße 5, UNC
321	4		mounting bolts for manifold	siehe oben / see above
322	1		Deckel Pilotventil / cover with pilot valve cavity	siehe/see PVAPSC
323	1		Stützring / back up ring	siehe/see SK-SC
324	1		O-Ring, cover ring, outside	siehe/see SK-SC
325	1		Distanzring / cover ring	siehe/see PVAPSC
326	1		Feder / spring U;	siehe/see PVAPSC
327	1		Ventilkegel / valve poppet C01	siehe/see PVAPSC
328	1		Blende / orifice Ø 1,3; 1/16" NPT	siehe/see PVAPSC
329	1		Blende / orifice Ø 0,9; M5 x 6	siehe/see PVAPSC
331	1		Ventilhülse / valve sleeve	siehe/see PVAPSC
332	2		O-Ring	siehe/see SK-SC
333	1		Kerbstift / locator pin DIN 1474	see sheet PVAPSC
334	2		O-Ring	siehe/see SK-SC
335	1		O-Ring	siehe/see SK-SC
336	4		Stützring / back up ring	siehe/see SK-SC
350	2		Schraube / screw M 6 x 35 DIN 912, 12.9	BG1+2
350	(2)		Schraube / screw M 6 x 50 DIN 912, 12.9	BG3+4
350	(2)		Schraube / screw M 6 x 50 DIN 912, 12.9	BG5+6
351	1		Vorspannventil-Deckel/pre load valve pilot cover	siehe/see PVACPVC
352	1		O-Ring	siehe / see SK-VC
353	1		Distanzring / cover ring NG16	BG1+2
353	(1)		Distanzring / cover ring NG25	BG3+4
353	(1)		Distanzring / cover ring NG32	BG5+6
354	1		Stützring / back up ring	siehe / see SK-VC
355	1		Hub- und Volumenverkleinerung/stroke- and volume reducer NG16	BG1+2
355	(1)		Hub- und Volumenverkleinerung/stroke- and volume reducer NG25	BG3+4
355	(1)		Hub- und Volumenverkleinerung/stroke- and volume reducer NG32	BG5+6
356	1		Feder / spring U; 4,0 bar, NG16	BG1+2
356	(1)		Feder / spring U; 4,0 bar, NG25	BG3+4
356	(1)		Feder / spring U; 4,0 bar, NG32	BG5+6
357	1		Typenschild / name plate	

Pos	Stck/ Qty	item number	Beschreibung / description	Bemerkung / remark
359	1		Ventilkegel / valve poppet C01, NG16	BG1+2
359	(1)		Ventilkegel / valve poppet C01, NG25	BG3+4
359	(1)		Ventilkegel / valve poppet C01, NG32	BG5+6
360	1		Stopfen / plug 1/16" NPTF	
361	2		O-Ring	siehe / see SK-VC
363	1		Ventilhülse / valve sleeve NG16	BG1+2
363	(1)		Ventilhülse / valve sleeve NG25	BG3+4
363	(1)		Ventilhülse / valve sleeve NG32	BG5+6
364	4		Stützring / back up ring	siehe / see SK-VC
365	2		O-Ring	siehe / see SK-VC
367	1		O-Ring	siehe / see SK-VC
368	1		Typenschild / name plate	
369	2		Niet / rivet UNIRIV;U-AF 1932-16485	
392	1		Blende / orifice Ø 1,0; M6 x 6, TUF-LOK	
Befestigungsschrauben / mounting bolts				
321	4		Schraube / screw M 10 x 120 DIN 912, 12.9	BG1, Gew / thr.1, 8
321	(4)		Schraube / screw M 12 x 120 DIN 912, 12.9	BG2, Gew / thr.1, 8
321	(4)		Schraube / screw M 12 x 140 DIN 912, 12.9	BG3+4, Gew / thr.1, 8
321	(4)		Scheibe / washer 12 DIN 125 ST	BG3+4, Gew / thr.1, 8
321	(4)		Schraube / screw M 16 x 160 DIN 912, 12.9	BG5+6, Gew / thr.1, 8
321	(4)		Schraube / screw M 14 x 140 DIN 912, 12.9	BG3+4, Gew / thr.4
321	(4)		Schraube / screw M 3/8-16 UNC x 4 3/4"	BG1, Gew / thr.3, 7
321	(4)		Schraube / screw M 7/16-14 UNC x 4 3/4"	BG2, Gew / thr.3, 7
321	(4)		Schraube / screw M 1/2-13 UNC x 5 1/2"	BG3+4, Gew / thr.3, 7
321	(4)		Schraube / screw M 5/8-11 UNC x 6 1/4"	BG5+6, Gew / thr.3, 7